

STANDARD PLANS FOR PUBLIC WORKS CONSTRUCTION

PROMULGATED BY THE
PUBLIC WORKS STANDARDS INC.
GREENBOOK COMMITTEE
1993
REV. 1996, 2005

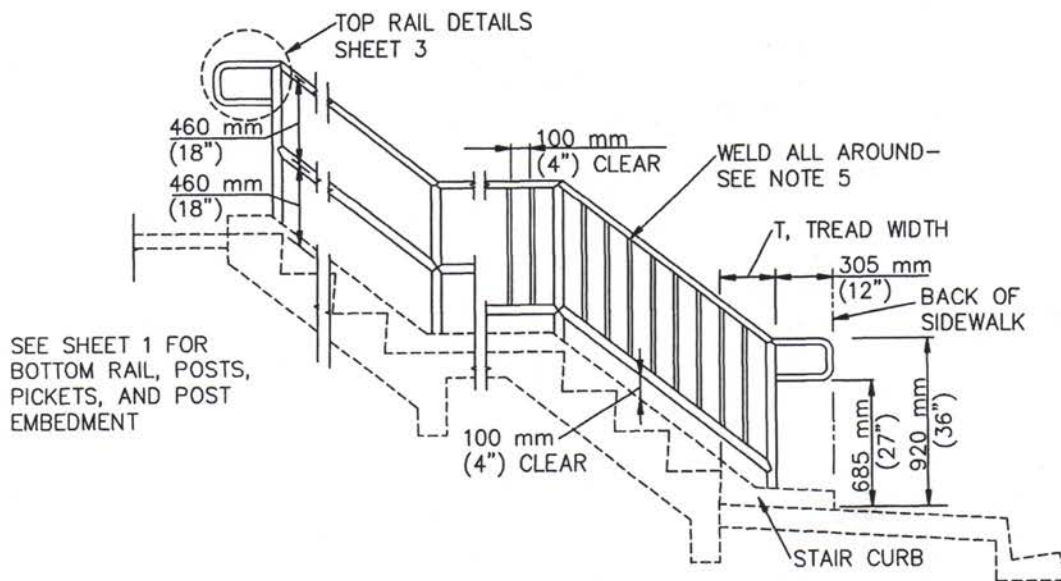
METAL HAND RAILINGS

USE WITH STANDARD SPECIFICATIONS FOR PUBLIC WORKS CONSTRUCTION

STANDARD PLAN
METRIC

606-2

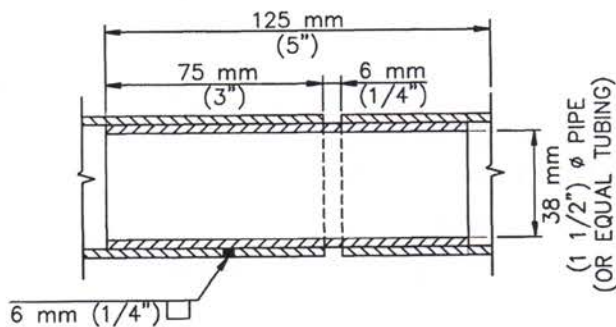
SHEET 1 OF 3



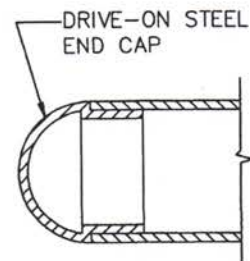
TYPE A

TYPE C

HANDRAIL INSTALLATION ON STAIRWAYS



SLIP JOINT DETAIL



CAP DETAIL FOR RAIL END

NOTES:

1. USE TYPE C WHERE ADJACENT GRADE IS MORE THAN 760 mm (2'-6") BELOW LANDING OR SIDEWALK FINISHED SURFACE.
2. RAILS, POSTS, AND PICKETS SHALL BE GALVANIZED STEEL PIPE.
3. PROVIDE SLIP JOINTS AT STAIRWAY EXPANSION JOINTS, 7.3 m (24') MAXIMUM.
4. MAXIMUM SPACING OF POSTS SHALL BE 2.440 m (8'-0") ON STRAIGHT ALIGNMENTS, AND 1.830 m (6'-0") ON CURVED ALIGNMENTS WITH LESS THAN 9.1 m (30') RADIUS. MAKE SPACING UNIFORM BETWEEN CHANGES IN ALIGNMENT.
5. WELDS SHALL BE SLOT OR FILLET WELDS EQUAL TO THICKNESS OF PIPE. WELD ALL JOINTS ALL AROUND.

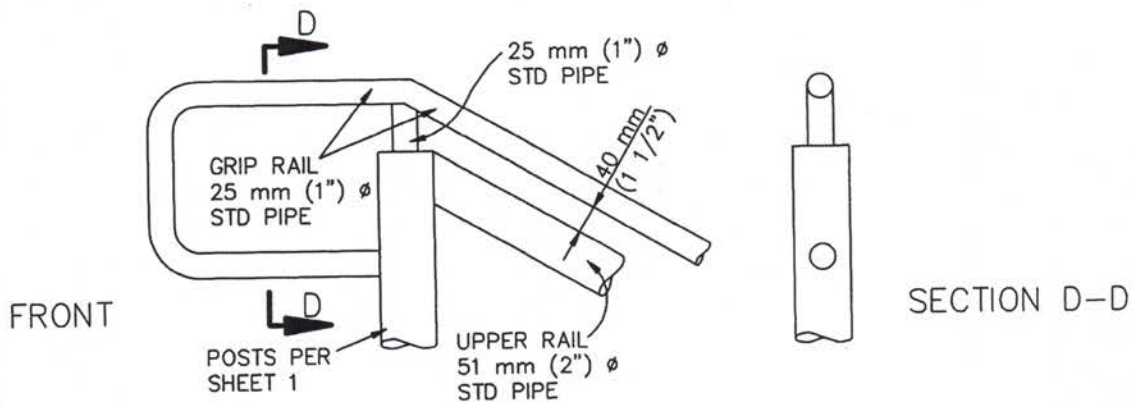
STANDARD PLANS FOR PUBLIC WORKS CONSTRUCTION

STANDARD PLAN
METRIC

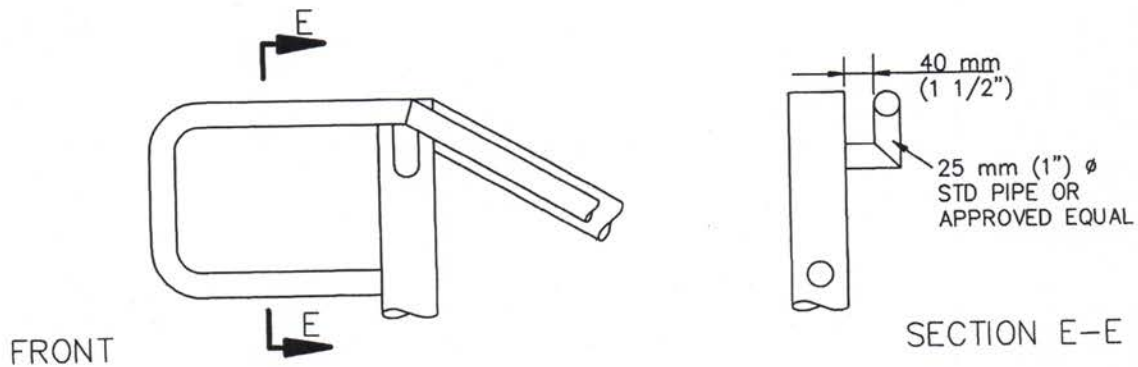
METAL HAND RAILINGS

606-2

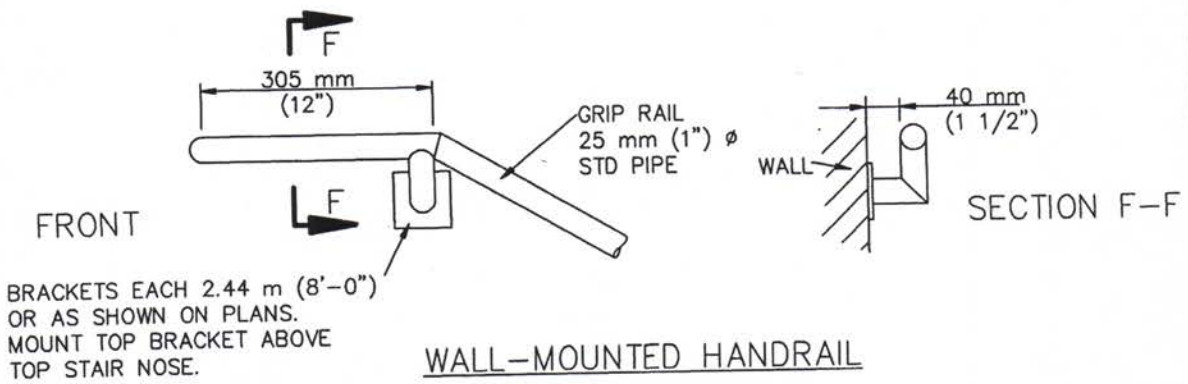
SHEET 2 OF 3



TOP RAIL TYPE 1



TOP RAIL TYPE 2



WALL-MOUNTED HANDRAIL